



| | | |
|--|---|--|
| <p>> JOHN EGBERT</p> <p>bustin makes me feel good</p> <p>power 3</p> <p>enter 3g</p> <p>#HUMAN</p> <p>Ability (1g) Destroy all opponent's #GHOST cards here with equal or less power this card's power + boons.</p> <p>FLAVORLOGUE</p> <p>001-C001</p> | <p>> JOHN EGBERT</p> <p>unstuck from canon</p> <p>power 4</p>  <p>BaconSpider</p> <p>enter 6g</p> <p>#HUMAN</p> <p>Once per round, this card may be refreshed during your turn for 1 boon.</p> <p>FLAVORLOGUE</p> <p>001-C002</p> | <p>> ROSE LALONDE</p> <p>game breaker</p> <p>power 3</p> <p>enter 4g</p> <p>#HUMAN</p> <p>Ability (3b) Choose any executable card, and destroy it (without activating it.)</p> <p>FLAVORLOGUE</p> <p>001-C003</p> |
| <p>> ROSE LALONDE</p> <p>guide writer</p> <p>power 4</p> <p>enter 2g</p> <p>#HUMAN</p> <p>Ability (1b) Look at the top card of anybody's deck. You may choose either to put the card back onto the top of their deck, or the bottom.</p> <p>FLAVORLOGUE</p> <p>001-C004</p> | <p>> DAVE STRIDER</p> <p>stock market investor</p> <p>power 4</p> <p>enter 2g</p> <p>#HUMAN</p> <p>Whenever this card earns a Boon, you may choose to instead earn +1 grist.</p> <p>FLAVORLOGUE</p> <p>001-C005</p> | <p>> DAVE STRIDER</p> <p>cut throat</p> <p>power 4</p> <p>enter 1g</p> <p>#HUMAN #GHOST</p> <p>FLAVORLOGUE</p> <p>001-C006</p> |
| <p>> JADE HARLEY</p> <p>rockin out</p> <p>power 4</p> <p>enter 1g</p> <p>#HUMAN</p> <p>FLAVORLOGUE</p> <p>001-C007</p> | <p>> JADE HARLEY</p> <p>dog tier</p> <p>power 4</p>  <p>BaconSpider</p> <p>enter -ATH: Your #BEAST</p> <p>#HUMAN #BEAST</p> <p>This card gains +1 Power per boon</p> <p>FLAVORLOGUE</p> <p>001-C008</p> | <p>> JANE CROCKER</p> <p>only one rez</p> <p>power 4</p> <p>enter 4g</p> <p>#HUMAN</p> <p>When you play this card, store a character card from your discard pile beneath it. // Ability (1b) Swap this card with it's stored card.</p> <p>FLAVORLOGUE</p> <p>001-C009</p> |

HOMESTUCK HOMESTUCK HOMESTUCK



HOMESTUCK HOMESTUCK HOMESTUCK

HOMESTUCK HOMESTUCK HOMESTUCK




HOMESTUCK HOMESTUCK HOMESTUCK

HOMESTUCK HOMESTUCK HOMESTUCK



HOMESTUCK HOMESTUCK HOMESTUCK

| | | |
|---|--|--|
| <p>> JANE CROCKER</p> <p>heir to the empire</p> <p>power 4</p> <p>enter -ATH: Any #TROLL</p> <p>#HUMAN</p> <p>Ability (2g) All opponent's #TROLL cards here have -1 power until the start of your next turn.</p> <p>FLAVORLOGUE</p> <p>001-C010</p> | <p>> ROXY LALONDE</p> <p>haxxorz</p> <p>power 3</p> <p>enter 3g</p> <p>#HUMAN</p> <p>When this card is destroyed, pick any one of your executable cards and activate it.</p> <p>FLAVORLOGUE</p> <p>001-C011</p> | <p>> ROXY LALONDE</p> <p>sleep walker</p> <p>power 4</p> <p>enter 1g</p> <p>#HUMAN</p> <p>Ability (1b) Move this card to any location.</p> <p>FLAVORLOGUE</p> <p>001-C012</p> |
| <p>> DIRK STRIDER</p> <p>distracted</p> <p>power 4</p> <p>enter 3g</p> <p>#HUMAN</p> <p>Ability (1g) While this card is invading, it's power -1 is also considered defending your planet until the start of your next turn.</p> <p>FLAVORLOGUE</p> <p>001-C013</p> | <p>> DIRK STRIDER</p> <p>your prince is awake</p> <p>power 4</p>  <p>enter 3g</p> <p>#HUMAN</p> <p>While this card is tapped, it resists 2 power against being destroyed by opponent's attacks or abilities.</p> <p>FLAVORLOGUE</p> <p>001-C014</p> | <p>> JAKE ENGLISH</p> <p>not just a peice of meat</p> <p>power 4</p> <p>enter 2g</p> <p>#HUMAN</p> <p>Ability (2g) Move all boons to another one of your #HUMAN cards.</p> <p>FLAVORLOGUE</p> <p>001-C015</p> |
| <p>> JAKE ENGLISH</p> <p>taste for adventure</p> <p>power 4</p> <p>enter 3g</p> <p>#HUMAN</p> <p>This card gains +1 power while invading.</p> <p>FLAVORLOGUE</p> <p>001-C016</p> | <p>> DAD</p> <p>mister egbert</p> <p>power 4</p> <p>enter 1g</p> <p>#HUMAN</p> <p>FLAVORLOGUE</p> <p>001-C017</p> | <p>> DAD</p> <p>mister crocker</p> <p>power 4</p> <p>enter 1g</p> <p>#HUMAN</p> <p>FLAVORLOGUE</p> <p>001-C018</p> |

HOMESTUCK HOMESTUCK HOMESTUCK



HOMESTUCK HOMESTUCK HOMESTUCK

HOMESTUCK HOMESTUCK HOMESTUCK




HOMESTUCK HOMESTUCK HOMESTUCK

HOMESTUCK HOMESTUCK HOMESTUCK



HOMESTUCK HOMESTUCK HOMESTUCK

| | | |
|--|---|--|
| <div> <div>> BEQ</div> <div>first guardian</div> <div>power 4</div> <div>enter 4g</div> <div> #BEAST Ability (3b) Search your deck for 1 executable card and add it to your hand. Then, put this card in your deck and shuffle your deck. </div> <div>FLAVORLOGUE</div> <div>001-C019</div> </div> | <div> <div>> BEQ</div> <div>good dog best friend</div> <div>power 4</div> <div>enter 4g</div> <div> #BEAST When any JADE HARLEY here would be destroyed, destroy this card instead, and move any JADE HARELY here to another location. </div> <div>FLAVORLOGUE</div> <div>001-C020</div> </div> | <div> <div>> GCAT</div> <div>first guardian</div> <div>power 4</div> <div>enter 4g</div> <div> #BEAST Ability (1g) Destroy all opponent's cards here with less power than this card, and remove 1 boon from all opponent's cards here with greater or equal power than this card. </div> <div>FLAVORLOGUE</div> <div>001-C021</div> </div> |
| <div> <div>> JASPERS</div> <div>beloved pet</div> <div>power 4</div> <div>enter 2g</div> <div> #BEAST #GHOST </div> <div>FLAVORLOGUE</div> <div>001-C022</div> </div> | <div> <div>> VODKA MUTINI</div> <div>swam of cats</div> <div>power 2</div> <div>enter -ATH: Your #BEAST</div> <div> #BEAST #MUTANT This card gains +1 power for every #BEAST card in your discard pile. </div> <div>FLAVORLOGUE</div> <div>001-C023</div> </div> | <div> <div>> MAPLEHOOF</div> <div>pony pal</div> <div>power 4</div> <div>enter 2g</div> <div>  #BEAST </div> <div>FLAVORLOGUE</div> <div>001-C024</div> </div> |
| <div> <div>> ARADIA MEGIDO</div> <div>robo explode</div> <div>power 3</div> <div>enter 2g</div> <div> #TROLL #MAROONBLOOD Ability (3b) Destroy this card. Once this card is in the discard pile after this ability, return it to your deck and shuffle your deck. </div> <div>FLAVORLOGUE</div> <div>001-C025</div> </div> | <div> <div>> ARADIA MEGIDO</div> <div>dead and back again</div> <div>power 4</div> <div>enter -ATH: Any ARADIA MEGIDO</div> <div> #TROLL #MAROONBLOOD #GHOST Ability (1b) Swap this card for any other #GHOST card from your hand. </div> <div>FLAVORLOGUE</div> <div>001-C026</div> </div> | <div> <div>> TAVROS NITRAM</div> <div>boy skylark</div> <div>power 4</div> <div>enter 1g</div> <div> #TROLL #BRONZEBLOOD Ability (1b) Move this card to any location. </div> <div>FLAVORLOGUE</div> <div>001-C027</div> </div> |

>TAVROS NITRAM

robot legs

power

4

enter
2g

#TROLL #BRONZEBLOOD

FLAVORLOGUE



001-C028

>SOLLUX CAPTOR

bifurcated fury

power

2

enter
2g

#TROLL #YELLOWBLOOD

This card gains +1 power per boon.
// Ability (1g) Destroy opponent's
character cards here with less than
this card's power*2, and then
discard all boons.

FLAVORLOGUE



001-C029

>SOLLUX CAPTOR

so quiet

power

3

enter
3g

#TROLL #YELLOWBLOOD

Ability (2g) Before your next turn,
the first opponent who has an
executable card activated has that
activation ignored.

FLAVORLOGUE



001-C030

>KARKAT VANTAS

friend leader

power

4

enter
~ATH: Your
#TROLL

#TROLL #MUTANT

Ability (2g) Give all your other
#TROLL cards here 1+boons power
until the start of your next turn.

FLAVORLOGUE



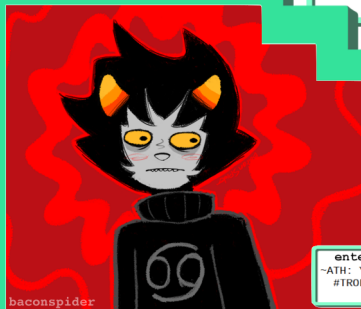
001-C031

>KARKAT VANTAS

universal cancer

power

4



enter
~ATH: Your
#TROLL

#TROLL #MUTANT

Ability (2g) Give all opponent's
#HUMAN cards here - "1 +boons"
power until the start of your next
turn.

FLAVORLOGUE



001-C032

>NEPETA LEIJON

poor sweet nepeta

power

4

enter
1g

#TROLL #OLIVEBLOOD #GHOST

FLAVORLOGUE



001-C033

>NEPETA LEIJON

beast hunter

power

4

enter
3g

#TROLL #OLIVEBLOOD

Ability (1g) Destroy all opponent's
#BEAST cards here with equal or
less power to this card's power +
boons.

FLAVORLOGUE

:33< APEX PURR-EDATOR



001-C034

>KANAYA MARYAM

fussy fangs

power

4

enter
3g

#TROLL #JADEBLOOD

Ability (3g) Move all boons to
another one of your #TROLL cards.

FLAVORLOGUE



001-C035

>KANAYA MARYAM

rainbow drinker

power

2

enter
3g

#TROLL #JADEBLOOD

This card's power increases by
boons*amount of your other #TROLL
cards here.

FLAVORLOGUE



001-C036

>TEREZI PYROPE

judge jury and executioner

power
5



enter
5g

#TROLL #TEALBLOOD

Choose an opponent's character card during your score phase- the chosen card has it's power reduced by boons until the end of your score phase.

FLAVORLOGUE



001-C037

>TEREZI PYROPE

taste the rainbow

power
4



enter
2g

#TROLL #TEALBLOOD

FLAVORLOGUE



001-C038

>VRISKA SERKET

bluh bluh huge bitch

power
5

enter
5g

#TROLL #COBALTBLOOD

Ability (3b) Choose an opponent's character card here- the chosen card can't be tapped until the start of your next turn.

FLAVORLOGUE



001-C039

>VRISKA SERKET

(vriska)

power
4

enter
-ATH: Any
VRISKA
SERKET

#TROLL #COBALTBLOOD #GHOST

This card gains +1 power per boon.

FLAVORLOGUE



001-C040

>EQUIUS ZAHAAK

100 percent strength

power
4

enter
5g

#TROLL #BLUEBLOOD

Ability (1g) Destroy all opponent's character cards here with less power than this card's power plus 2*boons.

FLAVORLOGUE



001-C041

>EQUIUS ZAHAAK

mechanical mastermind

power
4

enter
4g

#TROLL #BLUEBLOOD

Ability (3b) Bring the top most #TROLL card out of your discard pile into your hand.

FLAVORLOGUE



001-C042

>GAMZEE MAKARA

goofin around

power
3

enter
2g

#TROLL #PURPLEBLOOD

Ability (1g) Destroy all opponent's character cards here with less than this card's power + boons, and then discard all boons.

FLAVORLOGUE



001-C043

>GAMZEE MAKARA

the mirthful messiahs

power
4

enter
-ATH: Any
#TROLL

#TROLL #PURPLEBLOOD

When an opponent's character card is tapped here- decrease the power of that card by boons until the opponet's card is refreshed.

FLAVORLOGUE



001-C044

>ERIDAN AMPORA

morail zoned

power
3

enter
2g

#TROLL #VIOLETBLOOD #SEADWELLER

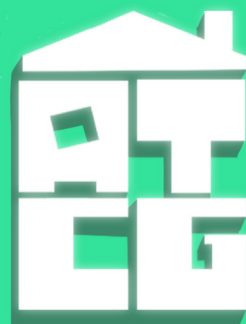
This card gains +1 power per boon.
// Ability (3g) Move all boons to another one of your #TROLL cards.

FLAVORLOGUE



001-C045

HOMESTUCK HOMESTUCK HOMESTUCK



HOMESTUCK HOMESTUCK HOMESTUCK

HOMESTUCK HOMESTUCK HOMESTUCK



HOMESTUCK HOMESTUCK HOMESTUCK

HOMESTUCK HOMESTUCK HOMESTUCK



HOMESTUCK HOMESTUCK HOMESTUCK

>ERIDAN AMPORA

angel hunter

power

3

enter

2g

#TROLL #VIOLETBLOOD #SEADWELLER

Ability (3b) Chose an opponent-
take the top most character card in
their discard pile, and nullify it.

FLAVORLOGUE



001-C046

>FEFERI PEIXES

glub glub glub

power

4

enter

2g

#TROLL #FUSCHIABLOOD #SEADWELLER

FLAVORLOGUE



001-C047

>FEFERI PEIXES

dreambubble buddy

power

3

enter

-ATH: Your
#TROLL

#TROLL #FUSCHIABLOOD #SEADWELLER

#GHOST

Ability (3b) Place a #GHOST card
from your hand here, and then
discard all boons.

FLAVORLOGUE



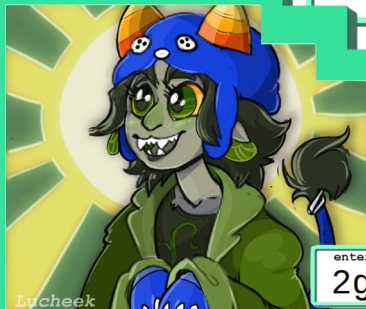
001-C048

>NEPETA LEIJON

happy wriggling day

power

4



Lucycheek

enter

2g

#TROLL #OLIVEBLOOD

*Birthday // Ability (1g) Store this
card under another one of your NEPETA
LEIJON. // While this card is stored
under a NEPETA LEIJON, it gains this
text: "This card gains +2 power per
Boon."

FLAVORLOGUE

Your name is NEPETA LEIJON. (07/04/2010)



001-C049

> RAM MOM

megido lusus

power

3

enter

1g

#BEAST

All ARADIA MEGIDO and DAMARA MEGIDO
here gain +1 power

FLAVORLOGUE



001-C050

> TINKERBULL

nitram lusus

power

3

enter

1g

#BEAST

All TAVROS NITRAM and RUFIOH NITRAM
here gain +1 power

FLAVORLOGUE



001-C051

> BICLOPS

captor lusus

power

3

enter

1g

#BEAST

All SOLLUX CAPTOR and MITUNA CAPTOR
here gain +1 power

FLAVORLOGUE



001-C052

> CRAB DAD

vantas lusus

power

3

enter

1g

#BEAST

All KARKAT VANTAS and KANKRI VANTAS
here gain +1 power

FLAVORLOGUE



001-C053

>POUNCE DE LEON

leijon lusus

power

3

enter

1g

#BEAST

All NEPETA LEIJON and MEULIN LEIJON
here gain +1 power

FLAVORLOGUE



001-C054

HOMESTUCK HOMESTUCK HOMESTUCK



HOMESTUCK HOMESTUCK HOMESTUCK

HOMESTUCK HOMESTUCK HOMESTUCK



HOMESTUCK HOMESTUCK HOMESTUCK

HOMESTUCK HOMESTUCK HOMESTUCK



HOMESTUCK HOMESTUCK HOMESTUCK

| | | |
|---|--|--|
| <p>> VIRGIN MOTHERGRUB</p> <p>maryam lusus</p> <p>power 3</p> <p>enter 1g</p> <p>#BEAST</p> <p>All KANAYA MARYAM and PORRIM MARYAM here gain +1 power</p> <p>FLAVORLOGUE</p> <p>001-C055</p> | <p>> PYRALSPITE</p> <p>pyrope lusus</p> <p>power 3</p> <p>enter 1g</p> <p>#BEAST</p> <p>All TEREZI PYROPE and LATULA PYROPE here gain +1 power</p> <p>FLAVORLOGUE</p> <p>001-C056</p> | <p>> SPIDER MOM</p> <p>serket lusus</p> <p>power 4</p> <p>enter -ATH: Any #TROLL</p> <p>#BEAST</p> <p>All VRISKA SERKET and ARANEA SERKET here gain +1 power</p> <p>FLAVORLOGUE</p> <p>001-C057</p> |
| <p>> ARTHUR</p> <p>zahhak lusus</p> <p>power 3</p> <p>enter 1g</p> <p>#BEAST</p> <p>All EQUIUS ZAHHAK and HORUSS ZAHAAK here gain +1 power</p> <p>FLAVORLOGUE</p> <p>001-C058</p> | <p>> GOAT DAD</p> <p>makara lusus</p> <p>power 2</p> <p>enter 1g</p> <p>#BEAST</p> <p>All GAMZEE MAKARA and KURLOZ MAKARA here gain +1 power</p> <p>FLAVORLOGUE</p> <p>never there when you need him</p> <p>001-C059</p> | <p>> SEAHORSE DAD</p> <p>ampora lusus</p> <p>power 3</p> <p>enter 1g</p> <p>#BEAST</p> <p>All ERIDAN AMPORA and CRONUS AMPORA here gain +1 power</p> <p>FLAVORLOGUE</p> <p>001-C060</p> |
| <p>> GL'BGOLYB</p> <p>piexes lusus</p> <p>power 4</p> <p>enter -ATH: Any #TROLL</p> <p>#BEAST</p> <p>All FEFERI PEXES and MEENAH PEXES here gain +1 power</p> <p>FLAVORLOGUE</p> <p>001-C061</p> | <p>> DIRK STRIDER</p> <p>daves bro</p> <p>power 5</p> <p>enter 6g</p> <p>#HUMAN #ANCESTOR</p> <p>Ability (3g) Destroy all opponent's character cards here with less than this card's power, and then move this card to any other location.</p> <p>FLAVORLOGUE</p> <p>001-C062</p> | <p>> ROXY LALONDE</p> <p>roses mom</p> <p>power 4</p> <p>enter 3g</p> <p>#HUMAN #ANCESTOR</p> <p>Ability (1g) Destroy an opponent's stored card.</p> <p>FLAVORLOGUE</p> <p>001-C063</p> |

HOMESTUCK HOMESTUCK HOMESTUCK



HOMESTUCK HOMESTUCK HOMESTUCK

HOMESTUCK HOMESTUCK HOMESTUCK



HOMESTUCK HOMESTUCK HOMESTUCK

HOMESTUCK HOMESTUCK HOMESTUCK



HOMESTUCK HOMESTUCK HOMESTUCK

> JANE CROCKER

johns nana

power

4

enter

3g

#HUMAN #ANCESTOR

Ability (3g) Give all your #HUMAN cards here +1 Boon.

FLAVORLOGUE



001-C064

> JAKE ENGLISH

jades grandpop

power

5

enter

-ATH: Any
JAKE
ENGLISH

#HUMAN #ANCESTOR

FLAVORLOGUE



001-C065

>DAMARA MEGIDO

the handmaid

power

3

enter

4g

#TROLL #MAROONBLOOD #ANCESTOR

This card gains +1 power for every card in your nullified pile.

FLAVORLOGUE



001-C066

>RUFIOH NITRAM

the summoner

power

4

enter

3g

#TROLL #BRONZEBLOOD #ANCESTOR

Ability (1g) Move an opponent's #BEAST card.

FLAVORLOGUE



001-C067

>MITUNA CAPTOR

the psiionic

power

4

enter

3g

#TROLL #YELLOWBLOOD #ANCESTOR

Ability (1g) Move an opponent's tapped #TROLL card.

FLAVORLOGUE



001-C068

>KANKRI VANTAS

the signless

power

4

enter

4g

#TROLL #MUTANT #ANCESTOR

Ability (1b) - Look at the top 4 cards of your deck. Put any Executables you find there on the top of your deck in any order, and all other cards on the bottom in any order.

FLAVORLOGUE



001-C069

>MEULIN LEIJON

the disciple

power

4

enter

2g

#TROLL #OLIVEBLOOD #ANCESTOR

FLAVORLOGUE



001-C070

>PORRIM MARYAM

the dolorosa

power

4

enter

3g

#TROLL #JADEBLOOD #ANCESTOR

Ability (3b) - Refresh another character card of yours, and then discard all boons.

FLAVORLOGUE



001-C071

>LATULA PYROPE

the neophyte

power

3

enter

4g

#TROLL #TEALBLOOD #ANCESTOR

Ability (1g) - Remove all boons from an opponent's card here.

FLAVORLOGUE



001-C072

HOMESTUCK HOMESTUCK HOMESTUCK



HOMESTUCK HOMESTUCK HOMESTUCK

HOMESTUCK HOMESTUCK HOMESTUCK



HOMESTUCK HOMESTUCK HOMESTUCK

HOMESTUCK HOMESTUCK HOMESTUCK



HOMESTUCK HOMESTUCK HOMESTUCK

>ARANEA SERKET
the marquise

power
4

enter
4g

#TROLL #COBALTBLOOD #ANCESTOR

This card gains +1 Power per Boon.
/ Ability (1g) Take all boons off
another one of your character
card's here, and place them all on
this card.

FLAVORLOGUE



001-C073

>HORUSS ZAHHAK
the expatriot

power
4

enter
3g

#TROLL #BLUEBLOOD #ANCESTOR

This card can not be "chosen" to be
affected by any player's effects
that require choosing a specific
card.

FLAVORLOGUE



001-C074

>KURLOZ MAKARA
the highblood

power
5

enter
5g

#TROLL #PURPLEBLOOD #ANCESTOR

This card's attacks can not be
resisted.

FLAVORLOGUE



001-C075

>CRONUS AMPORA
the orphaner

power
4

enter
4g

#TROLL #VIOLETBLOOD #SEADWELLER
#ANCESTOR

While this card is tapped,
opponent's #BEAST cards here can
not attack.

FLAVORLOGUE



001-C076

>MEENAH PEIXES
the condescer

power
5

enter
6g

#TROLL #FUSCHIABLOOD #SEADWELLER
#ANCESTOR

While this card is tapped, all
#TROLL cards here can not attack.

FLAVORLOGUE



001-C077

> JOHN EGBERT
check the mail

power
3

enter
3g

#HUMAN

Ability (1b) Draw a card, and
discard all boons.

FLAVORLOGUE



001-C078

>ROSE LALONDE
a little silly

power
4

enter
1g

#HUMAN

FLAVORLOGUE



001-C079

>DAVE STRIDER
rap battler

power
3

enter
3g

#HUMAN

Ability (3b) An opponent discards
cards in thier hand until they have
the same amount of cards in their
hand as you.

FLAVORLOGUE



001-C080

> JADE HARLEY
a quick reminder

power
3

enter
0g

#HUMAN

When you play this card from your
hand, gain +2 Grist. // Ability
(2b) Put this card in your deck.
Shuffle your deck.

FLAVORLOGUE



001-C081

HOMESTUCK HOMESTUCK HOMESTUCK



HOMESTUCK HOMESTUCK HOMESTUCK

HOMESTUCK HOMESTUCK HOMESTUCK



HOMESTUCK HOMESTUCK HOMESTUCK

HOMESTUCK HOMESTUCK HOMESTUCK



HOMESTUCK HOMESTUCK HOMESTUCK

| | | |
|--|---|---|
| <p>> ITCHY highly caffienated</p> <p>power 3</p> <p>enter 2g</p> <p>#LEPRECHAUN #FELT</p> <p>It takes 1 less grist to move this card.</p> <p>FLAVORLOGUE</p> <p>002-C001</p> | <p>> DOZE pain resistance</p> <p>power 3</p> <p>enter 2g</p> <p>#LEPRECHAUN #FELT</p> <p>When this card is not tapped, it resist 2 power from attacks and abilities to be destroyed.</p> <p>FLAVORLOGUE</p> <p>002-C002</p> | <p>> TRACE back to the past</p> <p>power 3</p> <p>enter 3g</p> <p>#LEPRECHAUN #FELT</p> <p>Ability (0g) Move an opponent's character who moved on the opponent's last turn back.</p> <p>FLAVORLOGUE</p> <p>002-C003</p> |
| <p>> CLOVER lucky charms</p> <p>power 3</p> <p>enter 1g</p> <p>#LEPRECHAUN #FELT</p> <p>Ability (3b) Give all your other invading character cards +1 Boon (not to exceed maximum boons.) Then discard all boons.</p> <p>FLAVORLOGUE</p> <p>002-C004</p> | <p>> FIN on your trail</p> <p>power 3</p> <p>enter 3g</p> <p>#LEPRECHAUN #FELT</p> <p>Ability (0g) Move this card to a location where an opponent moved a card on the opponent's last turn.</p> <p>FLAVORLOGUE</p> <p>002-C005</p> | <p>> DIE the voodoo you do</p> <p>power 4</p> <p>enter 2g</p> <p>#LEPRECHAUN #FELT</p> <p>Ability (2b) Swap this card with the topmost #FELT card in your discard pile.</p> <p>FLAVORLOGUE</p> <p>002-C006</p> |
| <p>> CROWBAR juju breaker</p> <p>power 3</p> <p>enter 2g</p> <p>#LEPRECHAUN #FELT</p> <p>Ability (6g) Choose an opponent's character here- remove that character's game text for the rest of the game.</p> <p>FLAVORLOGUE</p> <p>002-C007</p> | <p>> BQ snowman</p> <p>power 4</p> <p>enter 8g</p> <p>#CARAPACE #FELT</p> <p>~ATH: This Card // Execute: Destroy all intact planets and Moons. // When this card is destroyed, nullify it.</p> <p>FLAVORLOGUE</p> <p>002-C008</p> | <p>> STITCH damn good tailor</p> <p>power 3</p> <p>enter 2g</p> <p>#LEPRECHAUN #FELT</p> <p>Ability (1b) Add the top most inventory card in discard pile to your hand, then remove all boons.</p> <p>FLAVORLOGUE</p> <p>002-C009</p> |

HOMESTUCK HOMESTUCK HOMESTUCK



HOMESTUCK HOMESTUCK HOMESTUCK

HOMESTUCK HOMESTUCK HOMESTUCK



HOMESTUCK HOMESTUCK HOMESTUCK

HOMESTUCK HOMESTUCK HOMESTUCK



HOMESTUCK HOMESTUCK HOMESTUCK

| | | |
|--|--|--|
| <p>> SAWBUCK</p> <p>pushing it forward</p> <p>power 3</p> <p>enter 1g</p> <p>#LEPRECHAUN #FELT</p> <p>When this card is destroyed, you may move any boons that were on this card onto another one of your characters (not to exceed max boons.)</p> <p>FLAVORLOGUE</p> <p>002-C010</p> | <p>> MATCHSTICKS</p> <p>put out the fire</p> <p>power 4</p> <p>enter 3g</p> <p>#LEPRECHAUN #FELT</p> <p>Ability (1g) Refresh an opponent's tapped character card.</p> <p>FLAVORLOGUE</p> <p>002-C011</p> | <p>> EGGS</p> <p>half of a balanced breakfast</p> <p>power 3</p> <p>enter 3g</p> <p>#LEPRECHAUN #FELT</p> <p>Ability (3g) Search your discard pile for a BISCUITS card and play it here.</p> <p>FLAVORLOGUE</p> <p>002-C012</p> |
| <p>> BISCUITS</p> <p>half of a balanced breakfast</p> <p>power 3</p> <p>enter 3g</p> <p>#LEPRECHAUN #FELT</p> <p>Ability (3g) Search your discard pile for an EGGS card and play it here.</p> <p>FLAVORLOGUE</p> <p>002-C013</p> | <p>> QUARTERS</p> <p>flip flop</p> <p>power 4</p> <p>enter 3g</p> <p>#LEPRECHAUN #FELT</p> <p>Ability (0g) Swap the location of two of your tapped #FELT cards.</p> <p>FLAVORLOGUE</p> <p>002-C014</p> | <p>> CANS</p> <p>punch out</p> <p>power 4</p> <p>enter 5g</p> <p>#LEPRECHAUN #FELT</p> <p>Ability (1g) Return an opponent's character card with equal or less power this card to the opponent's deck.</p> <p>FLAVORLOGUE</p> <p>002-C015</p> |
| <p>> DOC SCRATCH</p> <p>gracious host</p> <p>power 3</p> <p>enter 4g</p> <p>#FELT</p> <p>While this card is at a moon, it costs 0g to move your other character cards here.</p> <p>FLAVORLOGUE</p> <p>002-C016</p> | <p>> CALIBORN</p> <p>leader of the felt</p> <p>power 4</p> <p>enter -ATH: Your #FELT card</p> <p>#CHERUB #FELT</p> <p>Ability (1b) Refresh one of your other #FELT cards here, and then remove all boons.</p> <p>FLAVORLOGUE</p> <p>002-C017</p> | <p>> BQ</p> <p>banished quasiroyal</p> <p>power 4</p> <p>enter 1g</p> <p>#CARAPACE</p> <p>FLAVORLOGUE</p> <p>002-C018</p> |

HOMESTUCK HOMESTUCK HOMESTUCK



HOMESTUCK HOMESTUCK HOMESTUCK

HOMESTUCK HOMESTUCK HOMESTUCK



HOMESTUCK HOMESTUCK HOMESTUCK

HOMESTUCK HOMESTUCK HOMESTUCK



HOMESTUCK HOMESTUCK HOMESTUCK

> DOC SCRATCH
scratch doctor

power
4

enter
4g

#FELT

Ability (3b) Remove all damage from your intact planet card.

FLAVORLOGUE



002-C019

> CALIBORN

artist of the masterpeice

power
4

enter
1g

#CHERUB

While this card is stored under another character card, the above character card gains +2 power, and gains the #CHERUB tag.

FLAVORLOGUE



002-C020

>DAMARA MEDIGO

demoness

power
5

enter
6g

#TROLL #MAROONBLOOD #FELT

This card resists 2 power from being destroyed by attacks and abilities from #TROLL cards.

FLAVORLOGUE



002-C021

>MEENAH PEIXES

lord englishs new servant

power
5

enter
6g

#TROLL #FUSCHIABLOOD #FELT

Ability (3g) Activate the ability of one of your tapped characters here- ignore the trigger of that ability.

FLAVORLOGUE



002-C022

>KURLOZ MAKARA

speak no evil

power
3

enter
4g

#TROLL #PURPLEBLOOD

Ability (1g) - All opponent's cards with boon-triggered abilities take +1 boon to trigger until this card is refreshed.

FLAVORLOGUE



002-C023

>MEULIN LEIJON

dank mimes

power
4

enter
2g

#TROLL #OLIVEBLOOD

FLAVORLOGUE



002-C024

>KANKRI VANTAS

the insufferable

power
3

enter
3g

#TROLL #MUTANT

While this card is tapped, it costs +1g for an opponent to move cards here.

FLAVORLOGUE



002-C025

>CRONUS AMPORA

greasy

power
4

enter
2g

#TROLL #VIOLETBLOOD #GHOST
#SEADWELLER

FLAVORLOGUE



002-C026

> JOHN EGBERT

heir transparent

power
4

enter
3g

#HUMAN #GODTIER

*Immortality // While this card has any immortality marks, you may move this character for 0g.

FLAVORLOGUE



002-C027

> JOHN EGBERT

do the windy thing

power

4

enter

4g

#HUMAN #GODTIER

*Immortality // While this card has any immortality marks, it gains the following Game Text: Ability (Xg) Move an opponent's character here to any other location, where X is the amount of Immortality Marks this card has.

FLAVORLOGUE



002-C028

>ANDREW HUSSIE

waste of space

power

2

enter

2g

#GHOST

FLAVORLOGUE



002-C029

HOMESTUCK HOMESTUCK HOMESTUCK



HOMESTUCK HOMESTUCK HOMESTUCK

HOMESTUCK HOMESTUCK HOMESTUCK



HOMESTUCK HOMESTUCK HOMESTUCK

HOMESTUCK HOMESTUCK HOMESTUCK



HOMESTUCK HOMESTUCK HOMESTUCK